



Rising 6th Grade

Night

2024-2025







# Introductions

*Linda Carnall - Principal*

*Alexandra Pillay - Asst. Principal*

*Sarah Wiggins - Asst. Principal*

*Lynda Parks - 6th Grade Counselor*





# Switzerland Point Administration

Linda Carnall  
Principal



Alexandra Pillay  
Assistant Principal



Sarah Wiggins  
Assistant Principal

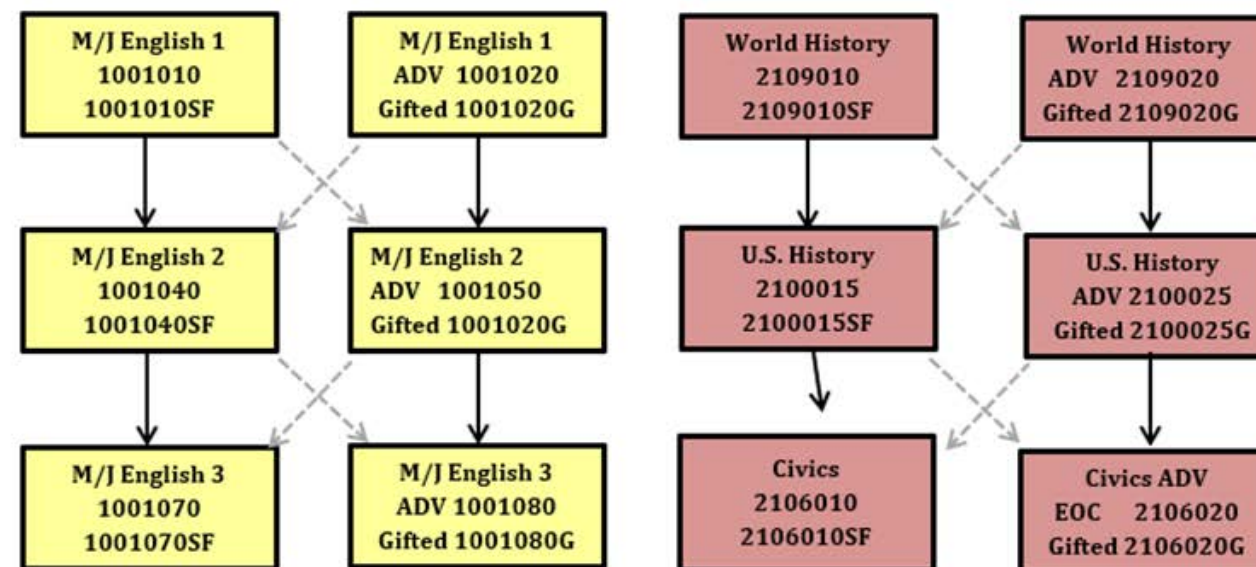


# Course Progression

## ELA/Social Studies

### ELA / SOCIAL STUDIES

-Bold lines indicate preferred pathway



#### Advanced Course Placement Criteria

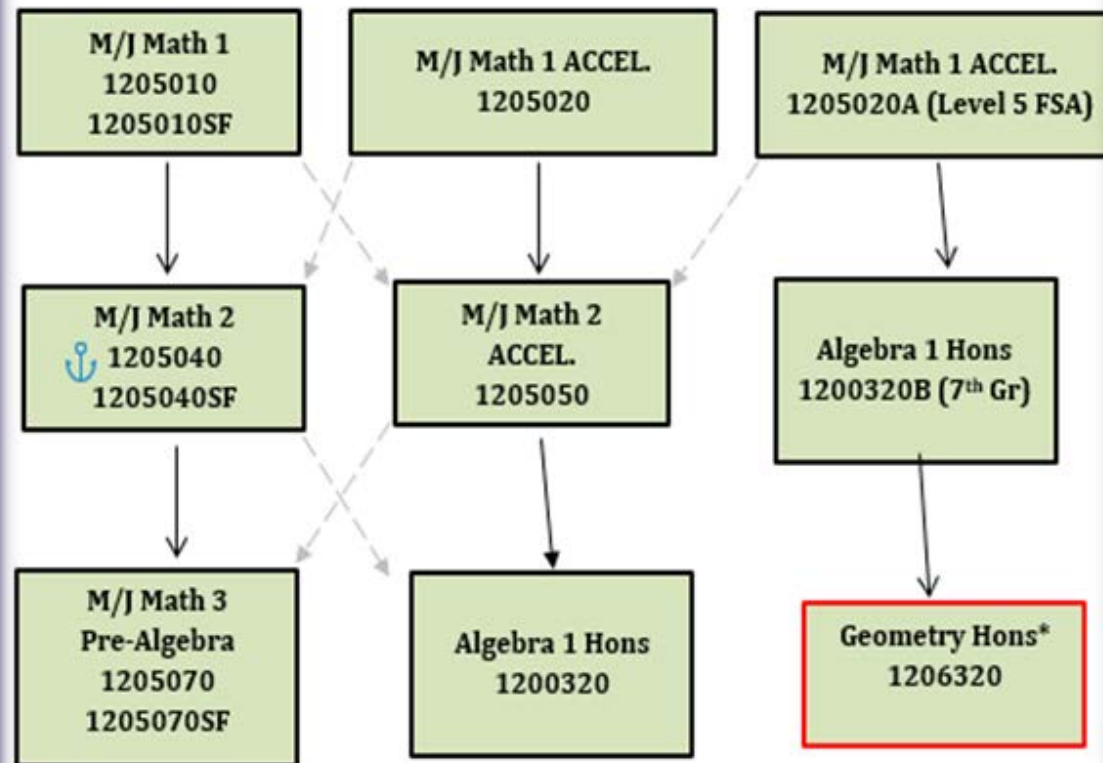
The following criteria represent consensus of all middle school and district administrators:

- Grades - A grade of C or better in the previous honors or advanced course, or students earning a grade of A in the previous standard course  
OR
- FSA - Level 4 or 5 in appropriate area and not less than a Level 3 in any area
  - ❖ On Mathematics FSA for placement in honors or advanced mathematics.
  - ❖ On Reading FSA for placement in honors or advanced English, social studies, science, or foreign language;OR
- In the case of extenuating circumstances, petition may be made on a case-by-case basis to the principal (or designee) for review of criteria to ensure proper course placement.



# Course Progression

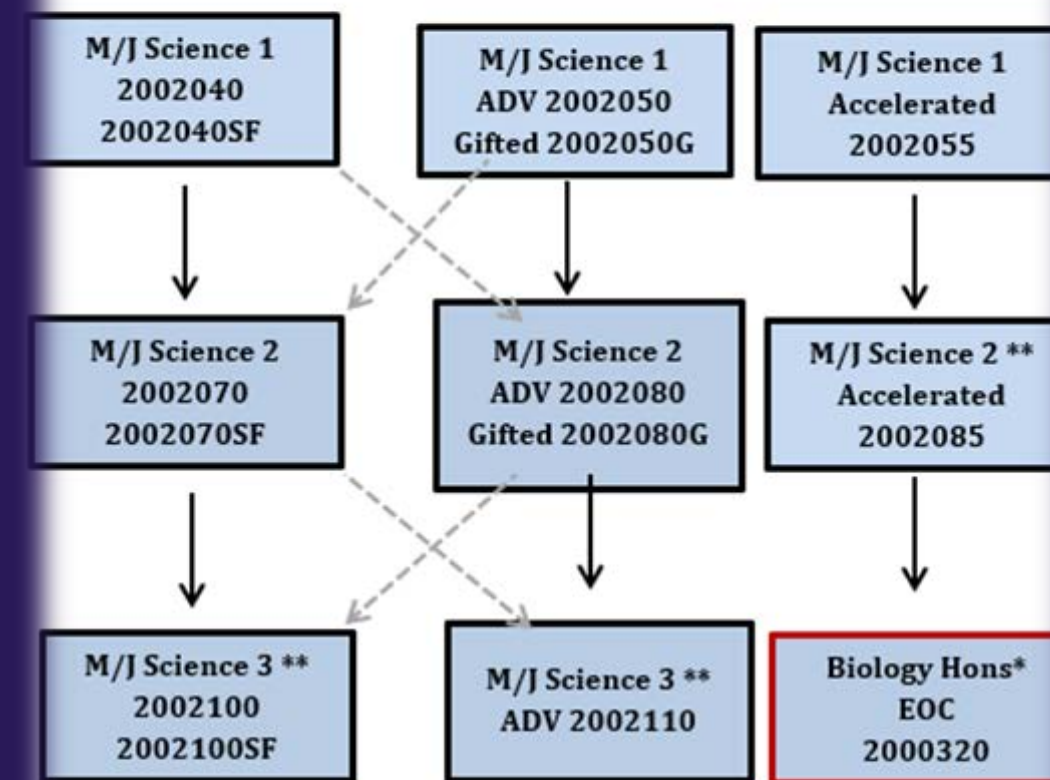
## Math/Science



- Please see the attached guidelines for math recommendations.
- If a 7<sup>th</sup> grader fails Algebra 1 Honors or 8<sup>th</sup> Grader Fails Algebra or Geometry, they must find a math credit to progress a grade level.
- There are ELA and Math scores that must be followed for Math placement

- Bold lines indicate preferred pathway

\* High School course

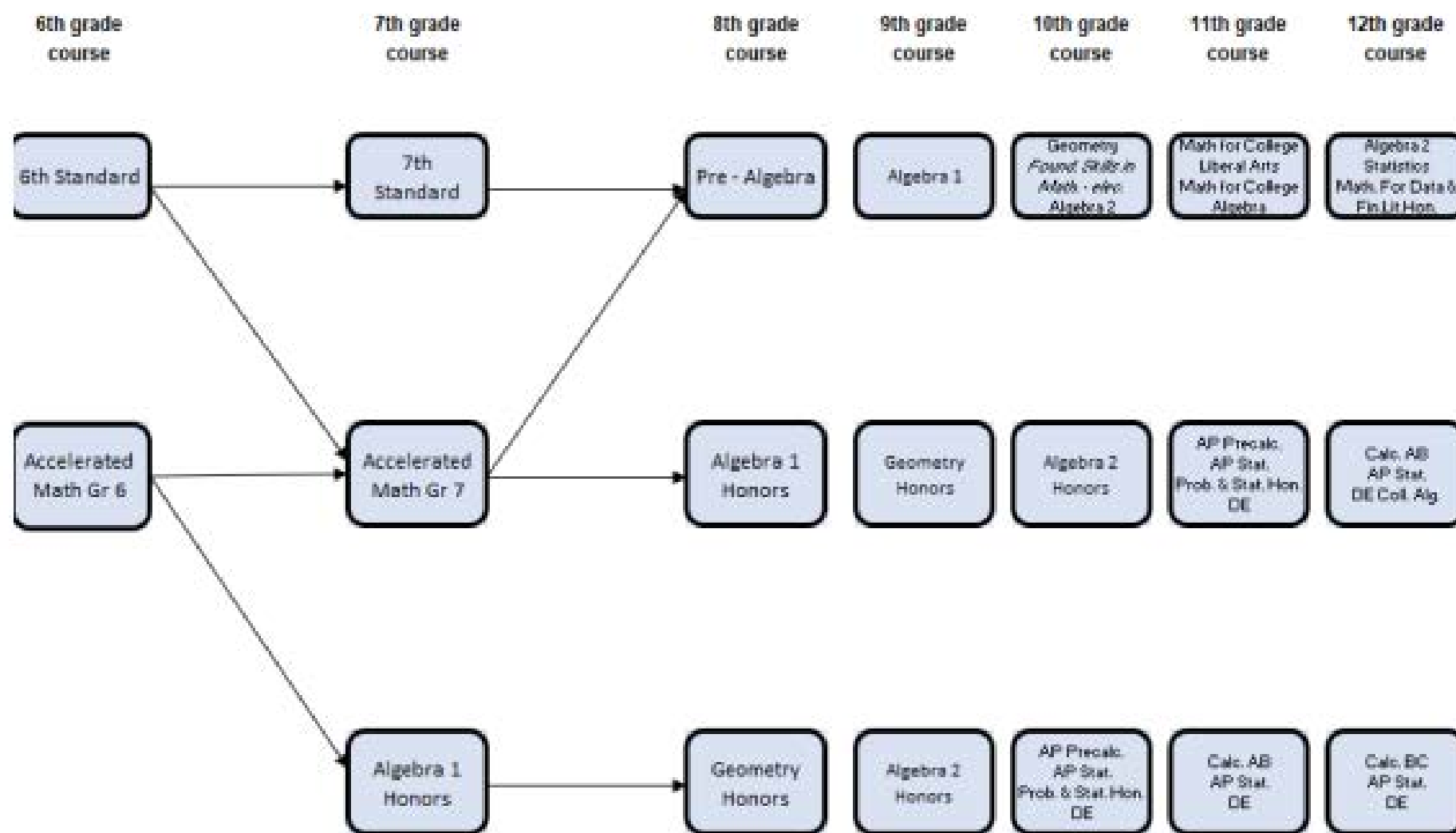


\*Geometry is a co-requisite for Biology, but a student can opt out of Biology and still take Geometry.

# Math Progression

\*\*\*Pending Updated Progression

## 2023 - 2024 SJCS Middle School Math Progression



Multiple data points to include assessment scores and course grades are used in determining placement.

Course offerings listed after Geometry is not an exhaustive list and are site dependent.

July 2023

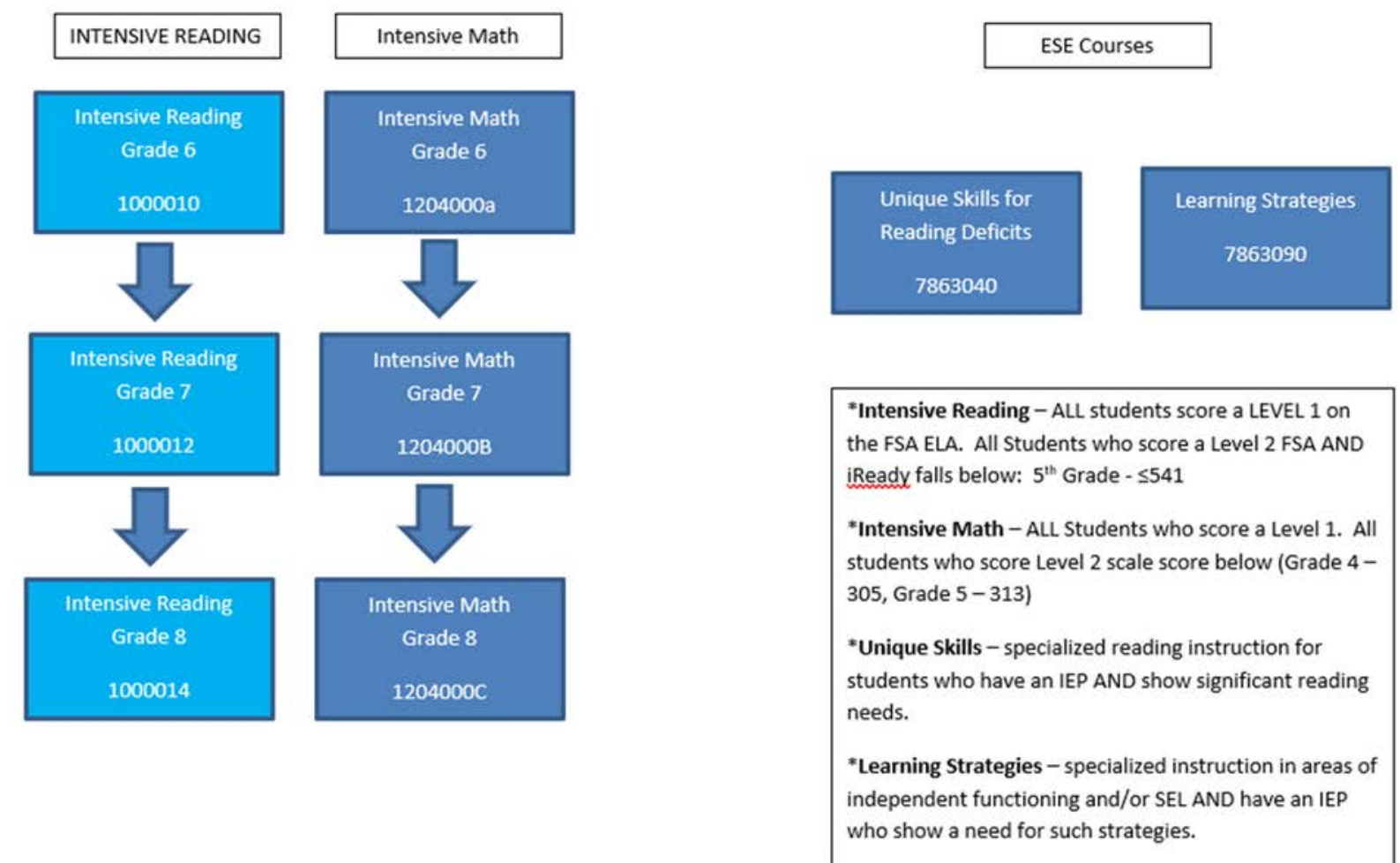
## Things to Consider:

- FAST Scores
- What math are you wanting to take in high school?
- Are you ready to start thinking about your high school GPA?
- Will require Summer Bridge work



# Course Progression Intensive Classes

## Intensive Classes





# 6th Grade

FAST MATH 6

- PM1, PM2 & PM3

FAST ELA 6

- PM1, PM2 & PM3

# 7th Grade

Algebra 1 EOC

- Algebra 1 Honors

FAST Math 7

- 7th Grade Std. Math: PM1 – PM3
- 7th Grade Accel. Math: PM1

FAST Math 8

- 7th Grade Accel. Math: PM2 & PM3

FAST ELA 7

- PM1, PM2 & PM3

SSA Science 8

- Only students in Accel. Science 2 course

# 8th Grade

Algebra 1 EOC

- Algebra 1 Honors

Geometry EOC

- Geometry Honors

FAST Math 8

- Pre-Algebra: PM1 – PM3

FAST ELA 8

- PM1, PM2 & PM3

Biology EOC

- Biology Honors

SSA Science 8

- 8th Grade Science
- Biology Honors

Civics EOC

- Civics



## State Exams

You can find the Year at a Glance for all 6th grade courses here:  
<https://www.stjohns.k12.fl.us/year-at-a-glance/>







# Selection Process

\*\*\*Pending Changes

## District Guidance

**Advanced Course Placement Criteria**  
The following criteria represent consensus of all middle school and district administrators:

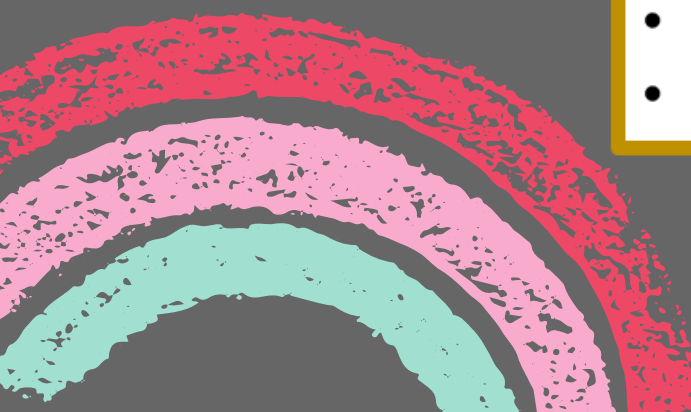
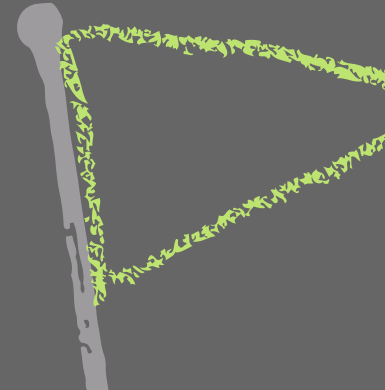
- Grades - A grade of C or better in the previous honors or advanced course, or students earning a grade of A in the previous standard course  
OR
- FSA - Level 4 or 5 in appropriate area and not less than a Level 3 in any area
  - ❖ On Mathematics FSA for placement in honors or advanced mathematics.
  - ❖ On Reading FSA for placement in honors or advanced English, social studies, science, or foreign language;

## School Guidance

Teacher Recommendations:

- Class grade
- Work ethic
- Potential for success

## Parent Guidance

- 
- 
- What are your child's interests/strengths?
  - What is the right blend for your child?
  - Extra curricular activities?
  - Talk to your child

# Course Progression Electives



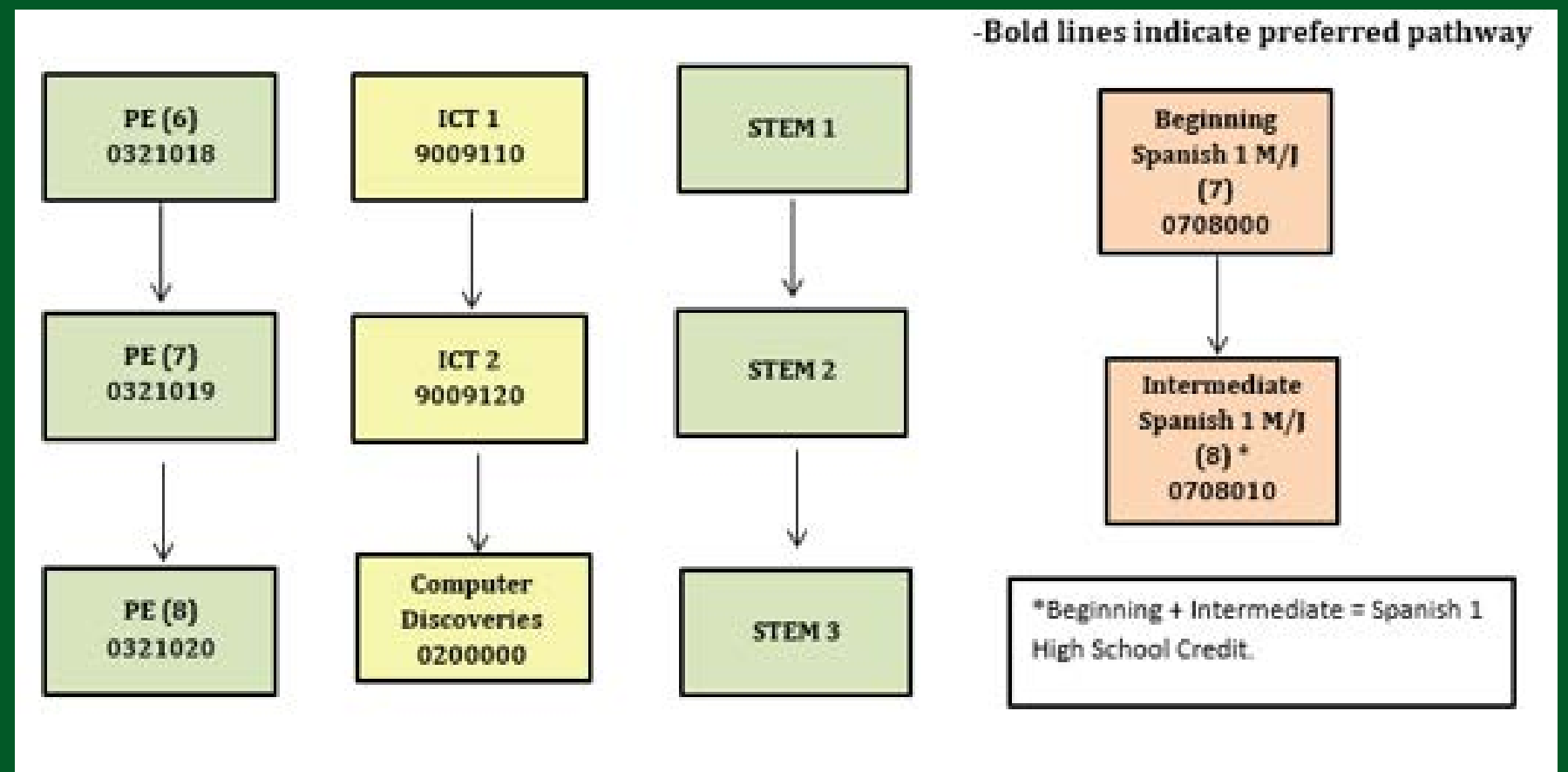
Art – Draw Paint  
Band

Career Planning for Gifted Students\*

ICT 1 – ALL 6th Graders take this course

Theater

Physical Education (required each year)

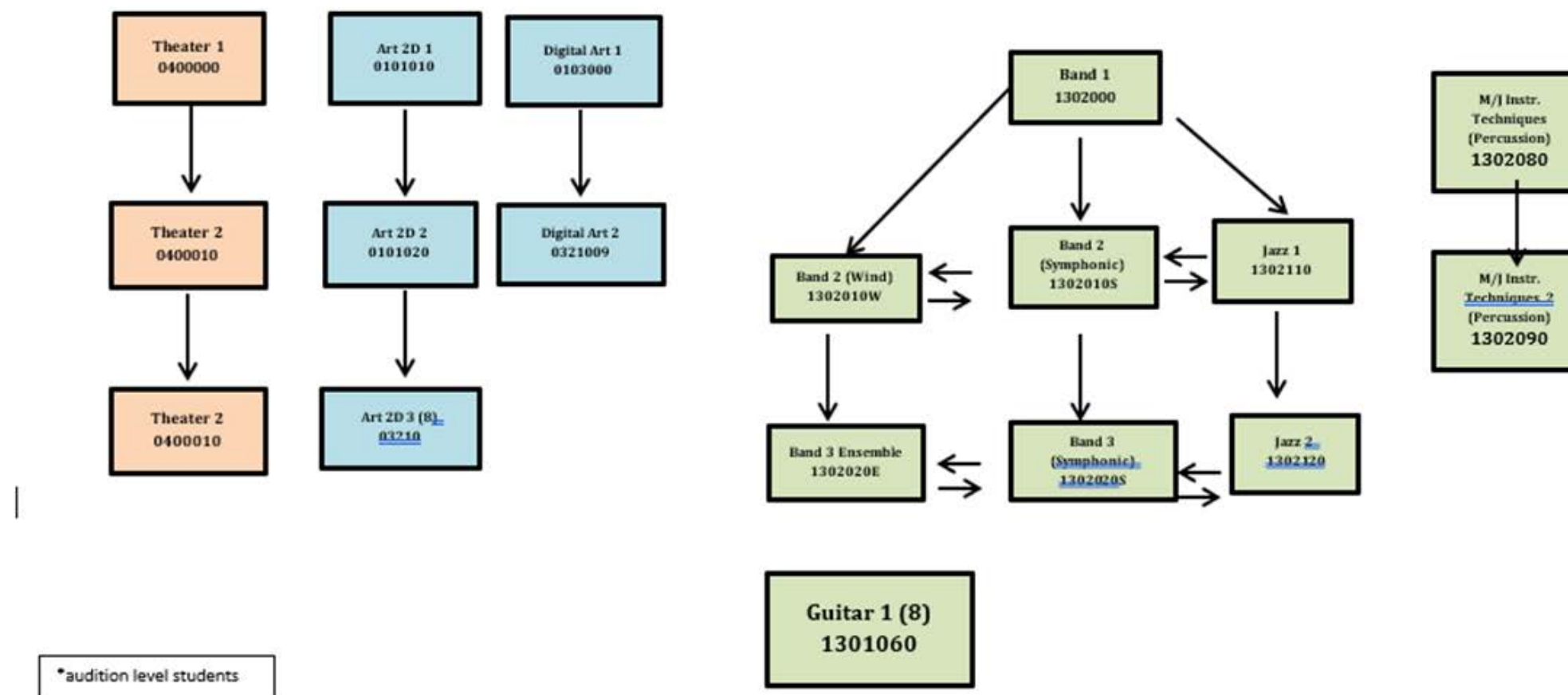




# Course Progression Electives

## ELECTIVES PROGRESSION - ARTS

-Bold lines indicate preferred pathway



# 2D-ART

## 2D Studio 1: Foundation Level

Open 6th – 8th Grade

- Drawing
- Painting
- Printmaking
- Collage

## 2D Studio 2: Intermediate Level

Open to 7th & 8th Graders who have passed Studio 1

- Projects and techniques are different from and more advanced than Studio 1
- Drawing
- Painting
- Printmaking
- Collage

## 2D Studio 3: Advanced Level

Open to select 8th graders who have completed Studio 1 and Studio 2

- Painting
- Collage
- Mixed Media
- Illustration
- Portfolio Development
- Drawing

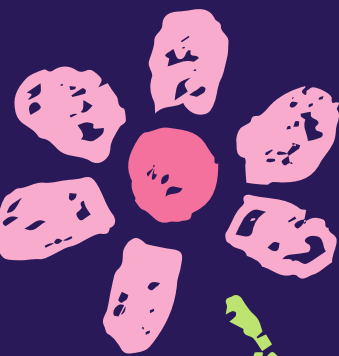




# Digital Art Studio 1 & 2



- Adobe Illustrator & Photoshop
- Graphic Design
- Photography
- Digital Painting
- Video/Animation







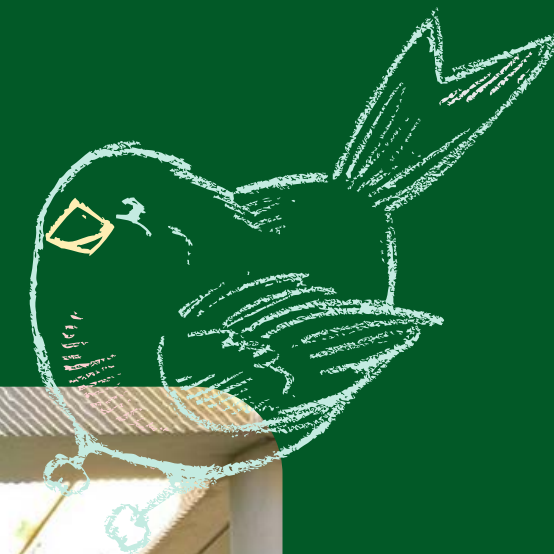
- 3 Evening Concerts (November, Feb/March, April/May)
  - Optional Extra Stuff
- Reward Band Trip to Wild Adventures in May, St. Augustine Christmas Parade, Night of the Arts, Solo & Ensemble Festival, JU & Lakeside Jazz Festivals, High School Football night
  - \$\$\$- Must rent an instrument + \$145 Fair Share
- Goal is to provide premium experience, provide everything except the instrument (uniform, reeds, music, extra instructors, etc.) and many, many extras





# Drama/Theater

Theatre at Switzerland Point is on the move. With Ms. Baker, there is a vision on create a department that relies on the students to make it happen. Introductory Classes will focus on all aspects of theatre to give you a taste for the art. Second- and Third-Year focus will bring you closer to technical theatre or performance theatre and possibly even playwriting! Join this class for a rounded look at the world through the lens of theatre.





# Career Research & Planning Elective for Gifted Students

- The goals and standards for student learning revolve around the Global Competencies for Deep Learning:
  - Creativity
  - Communication
  - Critical Thinking
  - Character
  - Collaboration
  - Citizenship
- Students will grow more empathetic, become problem-solvers, learn to think divergently, make connections between ideas, become explorers, learn to take creative risks, and become wildly and unabashedly confident in their giftedness.
- All of these activities allow students to grow in their social and emotional needs/goals as well as their academic success and global learning





# STEM Education at SPMS

STEM 1: Introduction to Technology (8600010)

STEM1: Expoloration of Robotic Technology  
(8600070)

Our STEM goal is to increase the Technological Literacy of students and to create learning situations that allow them to explore the combinations of STEM needed for critical thinking and advanced problem solving.

## What is **STEM**?

**S**

**SCIENCE**

*Observing,  
experimenting,  
making  
predictions,  
asking  
questions*



**T**

**TECHNOLOGY**

*Being inventive,  
using tools,  
making things  
work, identifying  
issues, using  
computers*



**E**

**ENGINEERING**

*Solving  
problems,  
using materials,  
designing  
and creating,  
building*



**M**

**MATH**


*Patterning,  
sequencing,  
exploring shapes,  
numbers,  
volume and  
size*

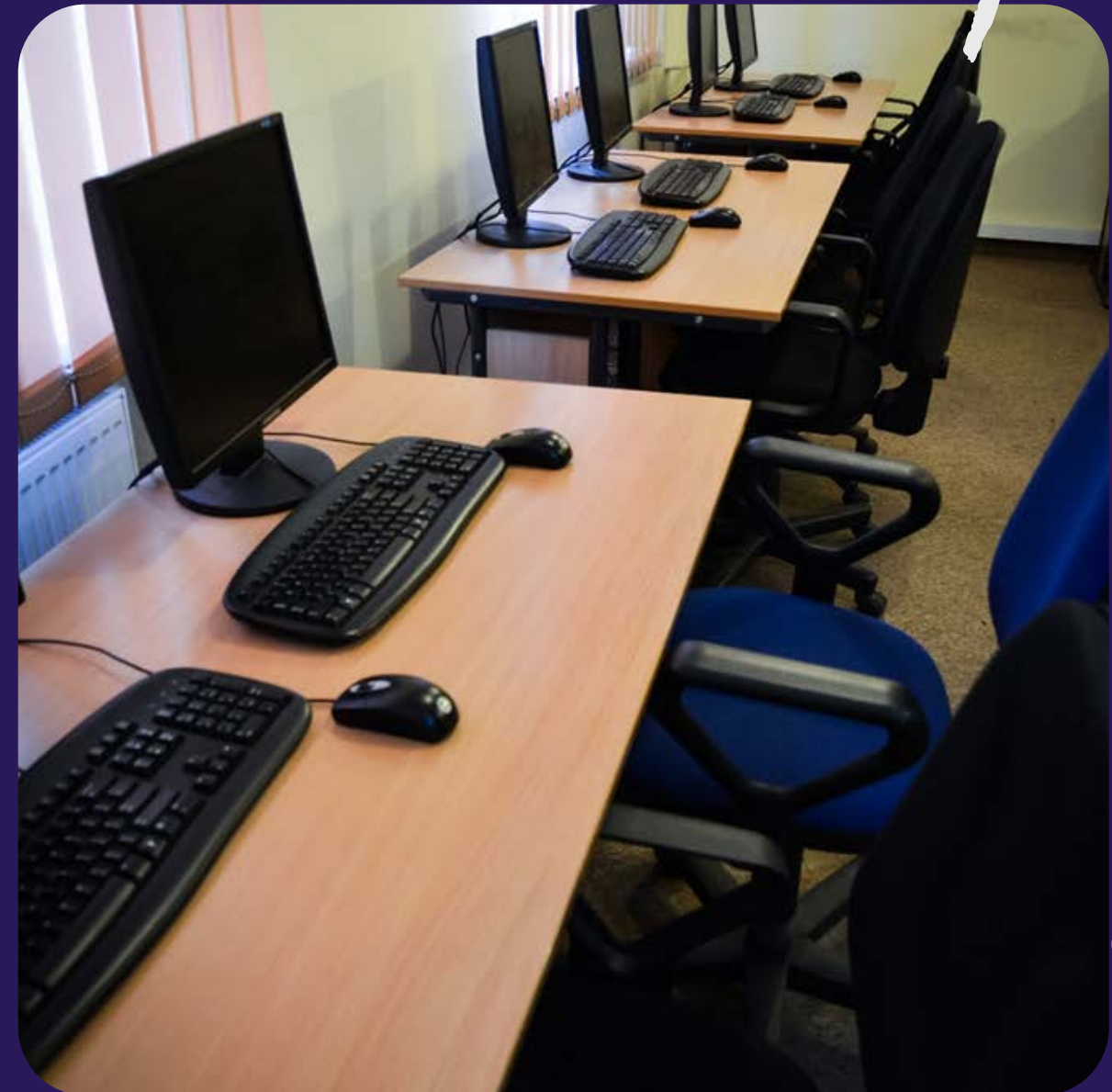




# ICT 1



- ICT 1 introduces students to core concepts associated with computers and their use including safety and privacy practices for online communication. The content includes hands-on opportunities to explore various software applications, such as Microsoft Word, Microsoft PowerPoint, and Pixlr.
  - Students will earn Digital Tool Certifications for the following topics: Cyber Security, Word Processing, Multimedia, and Computing Essentials.
- 





# Elective Forms

•Due at your registration appointment.

•CCE: 2/20 & 2/21

•HCE: 2/22 & 2/23

•TCE: 2/29 & 3/1

•Please rank your elective preferences at the bottom of the form.

•List 1 – 5. You may not receive your 1st or 2nd choice. You are expected to stay in this class for the full year.

•6th graders only get 1 elective.

•Intensive classes may take the place of electives, PE, and ICT.



## Sixth Grade Elective Sheet

Student Name:	Student Signature:
Parent Name:	Parent Signature:
Elem. School:	Parent phone number:

All Sixth Grade Students will take the following classes (circle Accel, Adv, or Std):

- English Language Arts (Adv / Std)
- Math (Accel / Std)
- Science (\*Accel / Adv / Std)
- World History (Adv / Std)
- Physical Education
- ICT (computer class)

Please note:

- Some students will be required to take Intensive Math and/or Intensive Reading depending on FSA scores released.
- **Intensive classes take precedence over elective choices.** Students who score a level 1 or 2 on the FSA will be placed in Intensive Reading and/or Math.
- Some electives do require fair shares.
- \*\*\*\*Initial placement in advanced classes based on teacher recommendation and scores. **Final placement** in advanced classes is pending FSA scores released over the summer. High Level 3 on both Reading and Math FSA is required to be placed in advanced courses.
- \*\*Double 5 is required for ACCEL Science 1. Will require a parent/student signed contract

Students may take one of the following electives:

Please rank your preference below (1-5). Mark 1 next to your first choice, 2 next to your second choice, etc.

Rank	Elective	Fair Share
	2D Art	\$10
	Literacy in Film	\$0
	Band 1	\$15/month + instrumental rental
	Gifted Elective**	\$0
	STEM 1	\$0
	Drama 1	\$0

\*\*Students must be identified officially as gifted to take this course.

NOTE: We will do our best to accommodate your elective choices, but placement not guaranteed.

# Support for Academic Needs



Intensive classes for Reading and / or math



Teachers and students supported by coaches



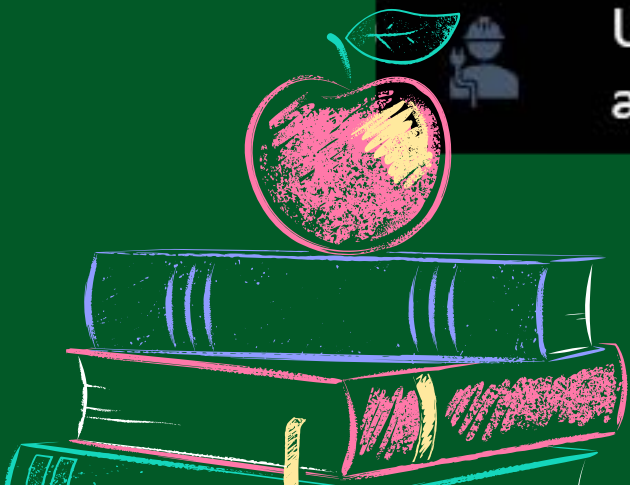
Individualized attention to skill deficits



Small class size



Utilize programs such as iXL, iReady, Wilson, and Rewards.

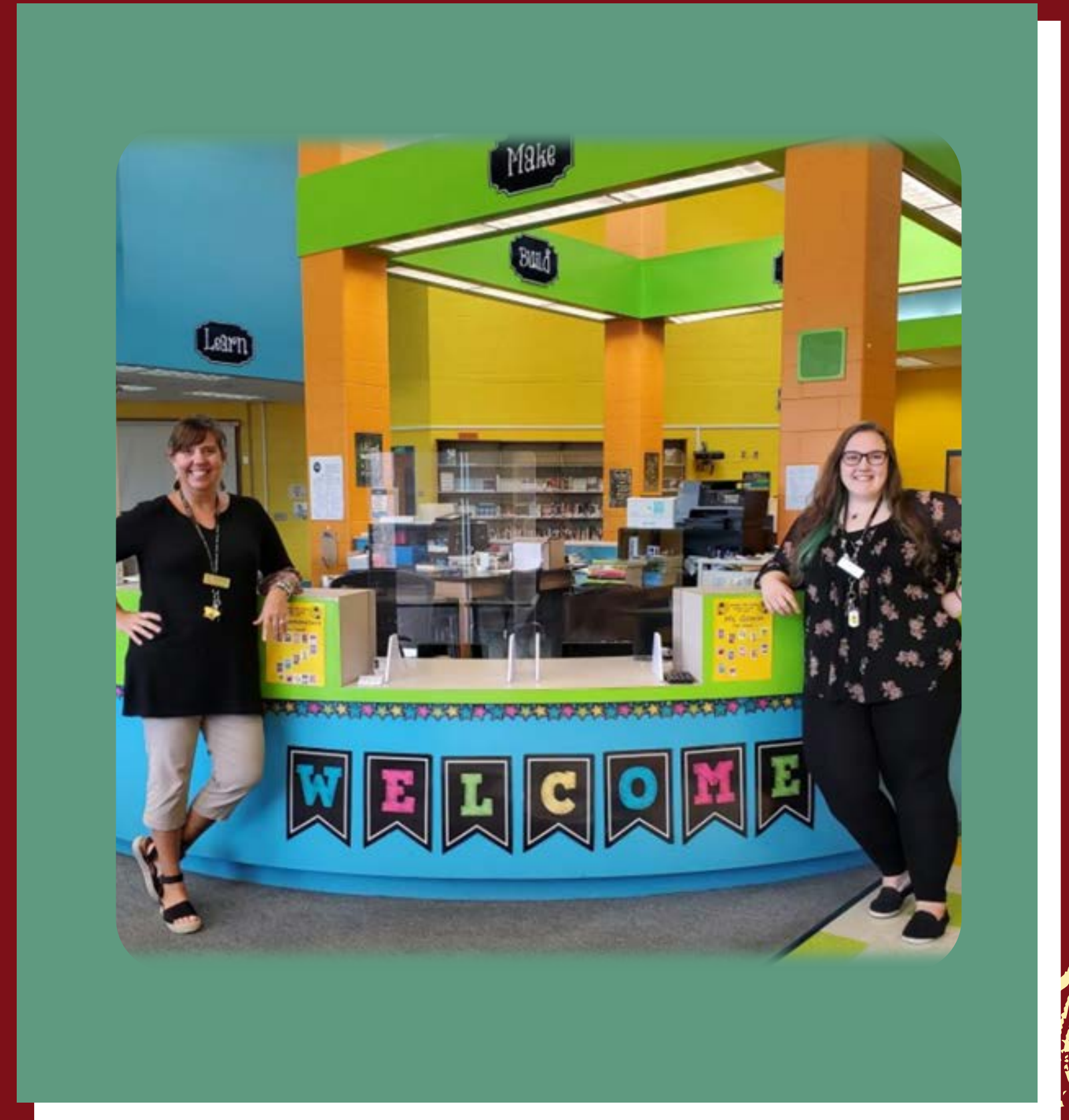




# Media Center

## Highlights:

- Author Visits.
- Highest SSYRA middle school participation in St. Johns County.
- Makerspace and Makerspace Weekly challenges.
- Monthly Reading Promotions (Blind Date with a Book, Speed Dating with a Book).
- Collaborative Research lessons.
- One of the Highest book circulation in St. Johns County Schools.
- Access to E books and digital audio books.





# Hello from the Dean's Office

Dean Gibian



Dean Saenz



Dean Gallagher





# What they do?

- Set and teach behavior expectations.
- Enforce positive behaviors.
- Issue consequences for violations against the Code of Conduct.
- Work with new teachers to manage classroom behaviors.
- Communicate with parents if concerns arise.
- Collaborate with guidance to assist students with personal and/or academic issues.
- Work with Student Resource Officer to ensure student safety.
- Advocate for students when necessary.
- Use restorative discipline strategies to encourage behavior reflection and learning from mistakes.
- Don't forget to get the PBIS Parent App in August to monitor your students positive Raider Bucks.



# Raider Expectation

utilize the Raider Expectations in rewarding student behavior and drive conversations when redirects need to occur.

Don't forget to download the PBIS Parent App in August. More information will be provided then.



## RAIDER \$ EXPECTATIONS

WE ARE

### RESPECTFUL

- We realize that everyone has the right to learn and work to not infringe on that right
- We give attention to the person speaking
- We use electronics only for educational purposes
- We contribute to a positive learning environment
- We value the contributions of all learners
- We actively seek out opportunities to practice kindness on our campus

### RESPONSIBLE

- We stay on task
- We ask questions when we do not understand
- We value challenging material
- We show up ready to learn, with our work completed and on time
- We are prepared with the required materials (books, paper, pencils...)

AND

### =SAFE=

- We hold our classmates accountable for their actions by letting an adult know when we see something unsafe
- We are careful with classroom materials
- We keep our hands and feet to ourselves and refrain from running, throwing item and pushing
- We use materials appropriately for their intended purpose
- We foster a learning space that makes every student, regardless of gender, race, ethnicity, or orientation, feel safe and honored within our walls





Meet 6th Grade teachers  
Get SPMS insider tips  
Learn how to use your locker  
Walk your schedule  
Make friends  
Get ready to CRUSH middle school

Date: July 31st – August 1st, 2024  
2 days at the end of July for your planning purposes.  
Communication will be sent once dates are finalized.



# SIXTH GRADE



# SPMS PTSO



## JOIN YOUR PTSO



Easy way to support your school! Join today for the 2024-2025 school year!

THANK YOU FOR YOUR SUPPORT!

**WELCOME 6TH GRADE FAMILIES!**  
**NO TIME OBLIGATION REQUIRED!**  
**SUPPORT YOUR SCHOOL STAFF, STUDENTS AND PROGRAMS!**

**FAMILY MEMBERSHIP FOR THE YEAR ONLY**


**\$25**







# Top 7 Ways to be a Successful Raider

- Read •Read the newsletters and emails from teachers and administration.
  - Allow •Allow your child time to adjust to middle school.
  - Invest •Invest in time everyday to talk to your child about their accomplishments and obligations.
  - Discuss •Discuss grades with your child using the tools provided such as Schoology and HAC.
  - Encourage •Encourage your child to not be afraid to talk to their teachers when they have questions.
  - Reassure •Reassure your child that middle school is not scary, and they will adjust.
  - Schoology •Schoology is a Must.
- 



Questions?

